

GLINT

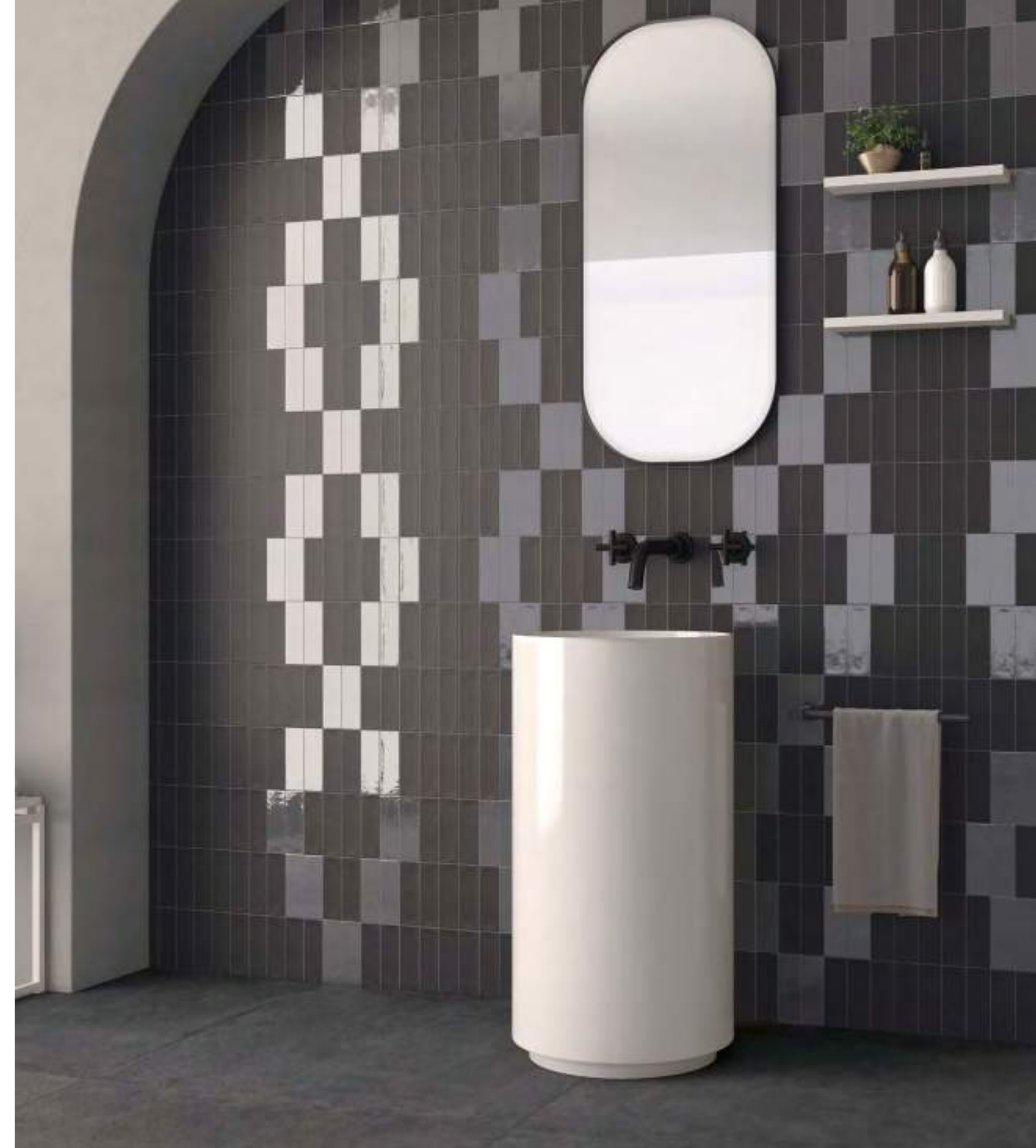
Porcelain Tile

4,8x14,6 cm – 1.8x5.7"

white · clay · taupe · sage · blue · black



● GLINT GREEN MATT/5X15 · GLINT CLAY MATT/5X15



● GLINT BLACK MATT/5X15 · GLINT BLACK/5X15

● MERAKI ANTH NT/90X90X0,9X0,9/R



GLINT

GLINT is an invitation to fun with a fresh and revitalizing touch, thanks to its combination of colors and finishes. The ability to mix matte and glossy pieces adds depth and dimension to spaces, creating a captivating visual effect that breathes life.

Each piece in this collection represents quality and style. In a 5x15 cm format, it offers a total of 6 different shades, allowing us to play with colors and combinations, creating endless possibilities.

- GLINT BLUE/5X15 · GLINT WHITE/5X15
- GLINT BLUE/5X15 · GLINT WHITE/5X15

GLINT es una invitación a la diversión con un toque fresco y revitalizante, gracias a su combinación de colores y acabados. El juego de poder combinar las piezas mate y brillo añade profundidad y dimensión a los espacios, creando un efecto visual cautivador que respira vida.

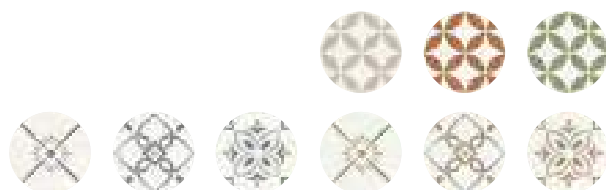
Cada pieza de esta colección representa calidad y estilo, en un formato 5x15 cm ofrece un total de 6 tonalidades diferentes, que nos permiten jugar con los colores y con las combinaciones creando una infinidad de posibilidades.



GLINT

porcelain tile — 4,8 x 14,6 / 1.8 x 5.7"

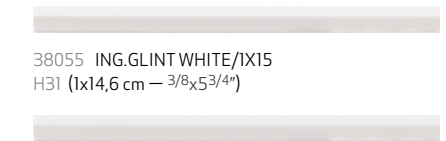
GLINT collection perfectly matches with MAYARI and PROVENZA collections
 Colección GLINT coordina con las colecciones MAYARI y PROVENZA



37818 GLINT WHITE/5X15
 Q56 (4,8x14,6 cm — 17/8x53/4")
 *103 Mapei



37824 GLINT WHITE MATT/5X15
 Q56 (4,8x14,6 cm — 17/8x53/4")
 *103 Mapei



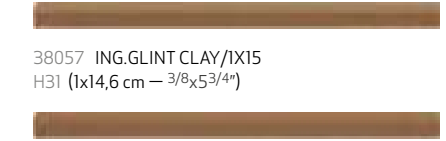
38055 ING.GLINT WHITE/IX15
 H31 (1x14,6 cm — 3/8x53/4")



37821 GLINT CLAY/5X15
 Q56 (4,8x14,6 cm — 17/8x53/4")
 *141 Mapei



37827 GLINT CLAY MATT/5X15
 Q56 (4,8x14,6 cm — 17/8x53/4")
 *141 Mapei



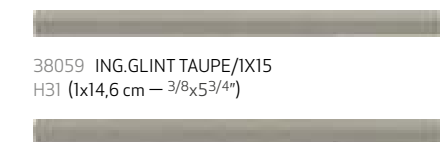
38057 ING.GLINT CLAY/IX15
 H31 (1x14,6 cm — 3/8x53/4")



37819 GLINT TAUPE/5X15
 Q56 (4,8x14,6 cm — 17/8x53/4")
 *133 Mapei



37825 GLINT TAUPE MATT/5X15
 Q56 (4,8x14,6 cm — 17/8x53/4")
 *133 Mapei



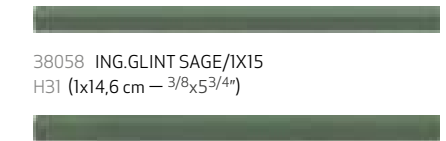
38059 ING.GLINT TAUPE/IX15
 H31 (1x14,6 cm — 3/8x53/4")



37820 GLINT GREEN/5X15
 Q56 (4,8x14,6 cm — 17/8x53/4")
 **19 Kerakoll



37826 GLINT GREEN MATT/5X15
 Q56 (4,8x14,6 cm — 17/8x53/4")
 **19 Kerakoll



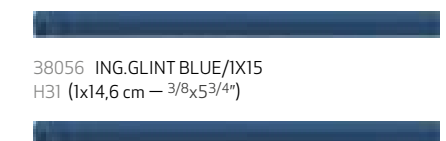
38058 ING.GLINT SAGE/IX15
 H31 (1x14,6 cm — 3/8x53/4")



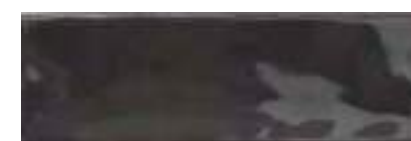
37822 GLINT BLUE/5X15
 Q56 (4,8x14,6 cm — 17/8x53/4")
 **16 Kerakoll



37828 GLINT BLUE MATT/5X15
 Q56 (4,8x14,6 cm — 17/8x53/4")
 **16 Kerakoll



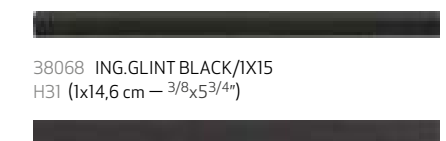
38056 ING.GLINT BLUE/IX15
 H31 (1x14,6 cm — 3/8x53/4")



37823 GLINT BLACK/5X15
 Q56 (4,8x14,6 cm — 17/8x53/4")
 **12 Kerakoll



37829 GLINT BLACK MATT/5X15
 Q56 (4,8x14,6 cm — 17/8x53/4")
 **12 Kerakoll



38068 ING.GLINT BLACK/IX15
 H31 (1x14,6 cm — 3/8x53/4")

38063 ING.GLINT BLACK MATT/IX15
 H31 (1x14,6 cm — 3/8x53/4")



TECHNICAL CHARACTERISTICS

	MATT	GLOSS	SHADE VARIATION	SHOWER WALL	SHOWER FLOOR	FLOOR TRAFFIC	UNE-ENV 12633	BS 7976-2	ANSI A137.1
GLINT	•	•	•	•	•	•	C2	+36WET	>0.42
GLINT MATT	•	•	•	•	•	•			
ING GLINT	•	•	•	•	•	•			
ING GLINT MATT	•	•	•	•	•	•			

PACKING

	UNIT	PIECES m²	PIECES sq ft	PIECES BOX	m³ BOX	sq ft BOX	WEIGHT BOX (kg)	WEIGHT BOX (lb)	BOXES PALLET	m² PALLET	sq ft PALLET	cm PALLET	THICKNESS (mm)	THICKNESS (inch)
GLINT	PIECE	143	13	60	0,42	4,53	7,52	16,54	136	57,19	615,54	105x80x75	8	0,31
GLINT MATT	PIECE	143	13	60	0,42	4,53	7,52	16,54	136	57,19	615,54	105x80x75	8	0,31
ING GLINT	PIECE	685	64	60	0,09	0,94	1,52	3,34	180	15,77	169,73	105x80x96	10	0,39
ING GLINT MATT	PIECE	685	64	60	0,09	0,94	1,52	3,34	180	15,77	169,73	105x80x96	10	0,39